

# HIPER Inference Cube

*Industrial Scalable Inference*

## The Challenge:

Today's intelligent applications need lightning-fast, reliable decisions at the edge. However, the complexity of AI inferencing can overwhelm traditional edge hardware. Moreover, AI inference systems must be matched to the problem domain, model size, required performance, etc. Flexibility, resilience, and power in a compact form factor is crucial.

## Our Solution:

Introducing the HIPER iSIM, the adaptable powerhouse built for the most demanding edge AI workloads.



## KEY BENEFITS



### SCALABILITY

Ability to scale inference capacity from 1 to 4 modules – guaranteeing performance that matches your evolving requirements.



### AVAILABILITY

Our Kubernetes-orchestrated architecture ensures high availability, minimizing downtime in mission-critical edge deployments.



### TAILORED TO YOU

Benefit from extensive customization – hardware accelerators, software stacks, modularity, and complete branding aligned to your unique needs.

## Key Features

- Modular design with 1-4 compact inference units
- Choice of small inference accelerators, NPU acceleration, or CPU-based execution
- Single, unified API endpoint for simplified integration
- High-availability Kubernetes deployment
- White-label ready for seamless integration with your brand
- Thorough customization of hardware and software
- monitoring, optimized yield prediction

## Ideal Use Cases

- Smart Manufacturing: Real-time quality control, predictive maintenance
- Intelligent Retail: Customer flow analysis, personalized recommendations
- Precision Agriculture: Ability to customize for harsh environments. Examples, Crop health monitoring, optimized yield prediction, etc.

## Specifications

- Product: HIPER Global model HGIC-1042
- Dimensions: 14.9x15x9 in (380x381x231 mm)
- Power socket: Single IEC port 110v-240v
- Power consumption: 60W to 200W depending on configuration
- Airflow: Front to back
- Rack-mount kit: HGIC-RMKIT-1042
- Weight: Up to 27 lbs., ZXY Kg 12



Front



Back

## HIPER GLOBAL MANUFACTURING FACILITIES



### North Andover, MA

- U.S Headquarters
- Manufacturing
- Prototyping
- Warranty Support



### United States

- Alpharetta, GA
- Marlborough, MA
  - Prototyping
  - Manufacturing
  - Warranty Support



### Israel (3 facilities)

- Prototyping
- Manufacturing
- Warranty Support



### Europe Facilities

- Reading, UK
- Dusseldorf, Germany
  - Prototyping
  - Manufacturing
  - Warranty Support

## HIPER GLOBAL SERVICES



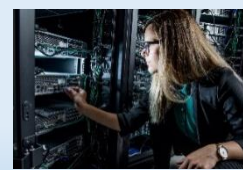
Design



Engineering



OEM Manufacturing



Rack Integration



Program Management



Global Logistics & Support

## INDUSTRIES



Health Care



Unified Communications



Digital Surveillance & Security



Military



Cyber Security



Broadcast & Visual Communications

## TESTING CAPABILITIES

HIPER Global is proudly **ISO 9001**, **ISO 13485**, and **AS9100** certified with tailored in-process and final inspections for each product.

### In-House Capabilities

By conducting in-house testing, we can save our customers both time and money.

- Temperature
- Humidity
- Airflow (CFM)
- Structure-Borne Noise
- Drop-Tower Shock Testing
- Power Measurements
- Stress Testing
- Airborne Noise
- Vibration Testing

Though we still utilize some third-party testing, our partners are conveniently located near our facilities to quickly support other common testing that we perform: **EMI/EMC**, **vibration**, **altitude**, **safety**, and many others.

### CONTACT US TODAY

Contact us to experience the future of scalable, highly available edge inference. [Click Here](#)